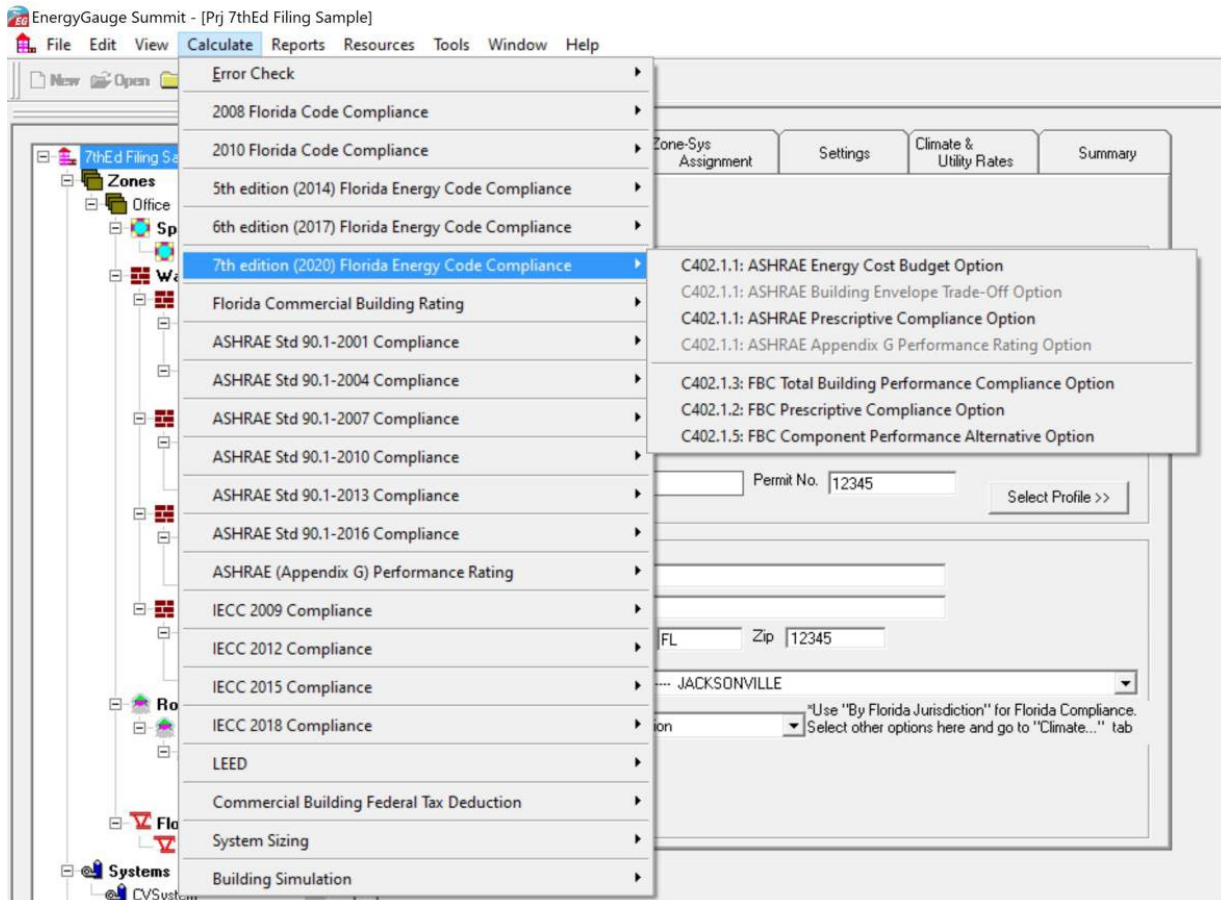


# EnergyGauge Summit 7.00 Release Notes

## Date of release: December 17, 2020

**Major Revision:** Implemented Florida Building Code, Energy Conservation, 7th Edition (2020)



### Additions to Florida Code Version

**7th Edition (2020) Florida Energy Code Compliance** - Compliance reports will be displayed on the screen when **Calculate** -> **Compliance** and one of the following options is chosen. The Compliance sub menu has the following options:

- \* *C402.1.1: ASHRAE Energy Cost Budget Option*
- \* *C402.1.1: ASHRAE Building Envelope Trade-Off Option (Not supported at this time) .*
- \* *C402.1.1: ASHRAE Prescriptive Compliance Option*
- \* *C402.1.1: ASHRAE Appendix G Performance Rating Option (Not supported at this time)*
- \* *C402.1.3: FBC Total Building Performance Compliance Option*
- \* *C402.1.2: FBC Prescriptive Compliance Option*
- \* *C402.1.5: FBC Component Performance Alternative Option*

## Additions to Premier Version

### **2013 ASHRAE 90.1 Compliance**

- \* *Energy Cost Budget Method*
- \* *Envelope Trade-Off Option (Not supported at this time)*
- \* *Prescriptive Building Option*

### **2016 ASHRAE 90.1 Compliance**

- \* *Energy Cost Budget Method*
- \* *Envelope Trade-Off Option (Not supported at this time)*
- \* *Prescriptive Building Option*
- \* *Appendix G Performance Rating Option (Not supported at this time)*

### **ASHRAE (Appendix G) Performance Rating -**

- \* *Version 2013 - Runs an Appendix G rating for ASHRAE Standard 90.1 2013*
- \* *Version 2016 - Runs an Appendix G rating for ASHRAE Standard 90.1 2016 (Not supported at this time)*

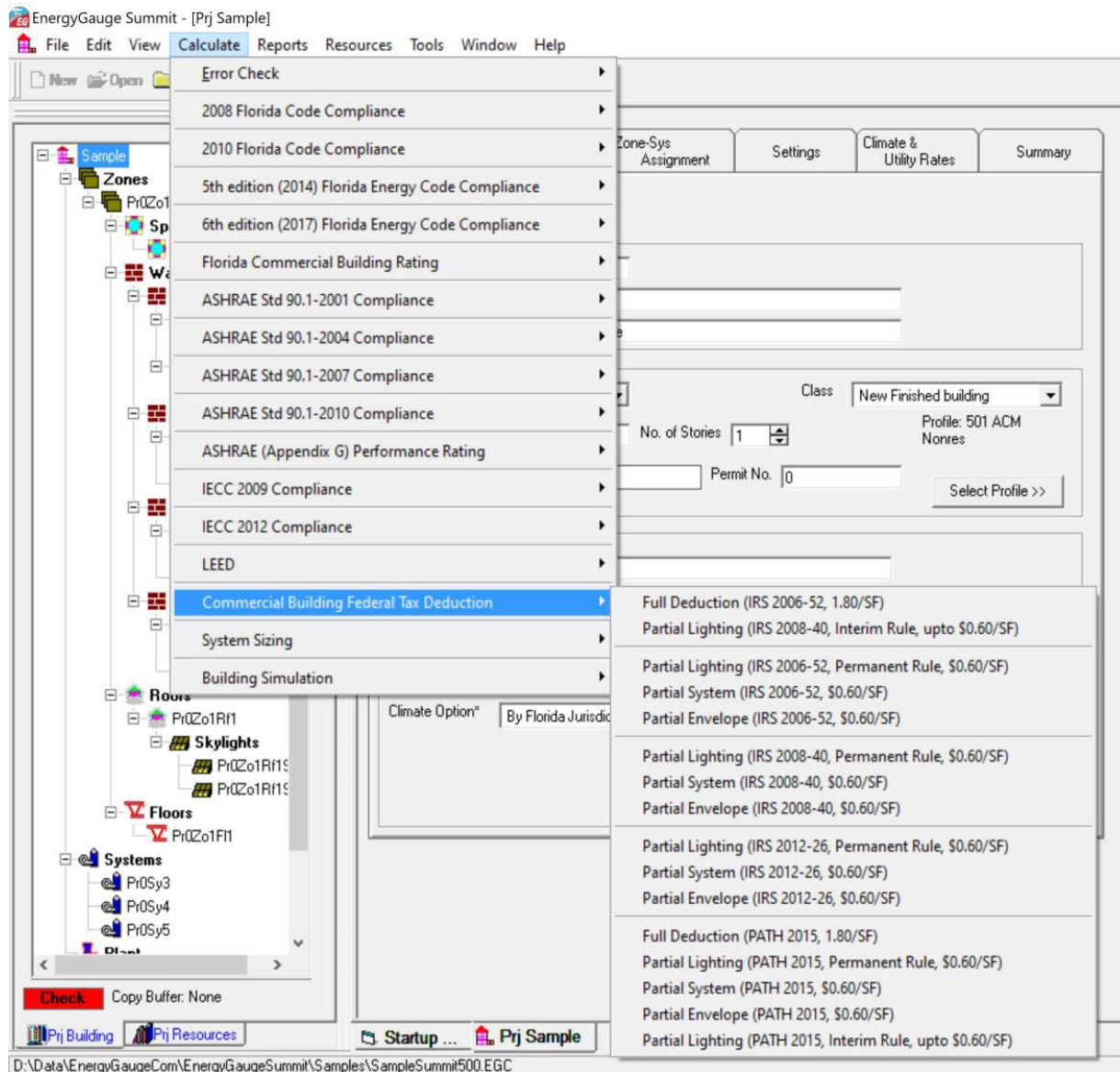
### **IECC 2015 Compliance**

- \* *Total Building Performance Compliance*
- \* *Prescriptive Compliance*
- \* *Component performance Alternative*

### **IECC 2018 Compliance**

- \* *Total Building Performance Compliance*
- \* *Prescriptive Compliance*
- \* *Component performance Alternative*

## Tax deduction for energy efficient commercial buildings.



## New PATH Provisions in the Energy Policy Act 2005 allowing for a tax deduction for energy efficient commercial buildings.

- \* Full Deduction ( PATH 2015, \$1.80/SF)
- \* Partial Lighting (PATH 2015, Interim Rule, up to \$0.60/SF)
- \* Partial Lighting Deduction (PATH 2015, \$0.60/SF)
- \* Partial System Deduction ( PATH 2015, \$0.60/SF)
- \* Partial Envelope Deduction (PATH 2015, \$0.60/SF)

**For more information see your help manual or Visit:**

<http://help.EnergyGauge.com/Summit/Ver7.0.1/WebHelp/>